

THE POPPY STUDY

'Patient reported outcomes, postoperative pain and pain relief after day case surgery'

Your hospital is taking part in RAFT's 4th national project.

Study looking at recovery from day-case surgery

The POPPY study will measure...

Short term recovery and

Long term prevalence of opioid use & persistent pain

...in day-case surgical patients.

Prospective, multi-centre, observational cohort study.

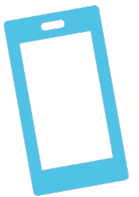
Inclusion criteria:

- Adults ≥ 18 years
- Access to a smart phone
- Day-case surgery
- Anaesthetist present
- Sedation/RA/GA
- Read & understand English



Snapshot data collection for 5 days will take place in your hospital between:

Follow up information will be collected by online SMS text messages on days one, three, seven, and three months after surgery.



Local principal investigator (PI):

Local trainee lead:



RAFT

RESEARCH & AUDIT
FEDERATION OF TRAINEES



Plymouth Research
and Development
"today's research for tomorrow's health"

